

South Link Project Update

Briefing Outline

- Background
- Planning & Preliminary Design Coordination
- Interagency Agreements
- South Link Project Update
- Next Steps



Final Preliminary Design

**South Airport Expressway
Planning and Preliminary Design**



SHEET 1 of 1
Port of Seattle
Prepared by
Aviation Planning
Date
April, 2010

South Link Project Update

Interagency Agreements

- **Interlocal Agreement - December 14, 2010**
- **Preliminary Design POS Utility Relocation – December 30, 2011**
- **Term Sheet - February 7, 2012**
- **Final Design POS Utility Relocation – March 30, 2012**
- **Memorandum of Agreement – In Progress**

South Link Project Update Port Commission Briefing May 1, 2012



Today's Presentation

- Project Status
- Design Build Procurement
- Agreements
 - City of SeaTac
 - Port of Seattle
 - Public/Private Utilities
- Community Outreach
- Next Steps



South Link – SeaTac/Airport Station to South 200th

Project Description

- 1.6 miles elevated double track guideway
- Elevated station
- Park-and-ride facility
- Bus Connections, including King County Metro Rapid Ride
- Off-street passenger drop-off area
- Secured bicycle parking & bikes on trains
- Improved pedestrian and bicycle connections in the station vicinity
- Traction Power Sub-Station

Stakeholders

- Residents and businesses
- Current and future riders
- U.S. DOT / FTA
- Port of Seattle
- City of SeaTac
- Public/Private Utilities
- Potential TOD interests



South Link Schedule

- ✓ SEPA/NEPA Approval June 2011
- ✓ Sound Transit Board approved South Link Project July 2011
- ✓ Design-Build Procurement began Fall 2011
- ✓ Right of Way Acquisitions began Fall 2011
- ✓ Awarded \$10 million TIGER III Grant December 2011
- ✓ Port of Seattle/City of SeaTac Approvals May/June 2012
- ✓ Advance Utility Relocation Fall 2012 - Spring 2013
- ✓ Award Design-Build Contract (Guideway & Station) Fall 2012
- ✓ Begin Major Construction Activities Spring 2013
- ✓ Light Rail Service Begins Fall 2016

Design-Build Procurement (Guideway and Station)

- Capital Projects Advisory Review Board Approval July 2010
- Baseline scope, schedule & budget based on D/B delivery July 2011
- Issued Request for Qualifications October 2011
- Issued Request for Proposals March 2012
- Proposals Due June 2012
- Contract Award August 2012
- Begin Construction Early 2013



South Link Design-Build Shortlist

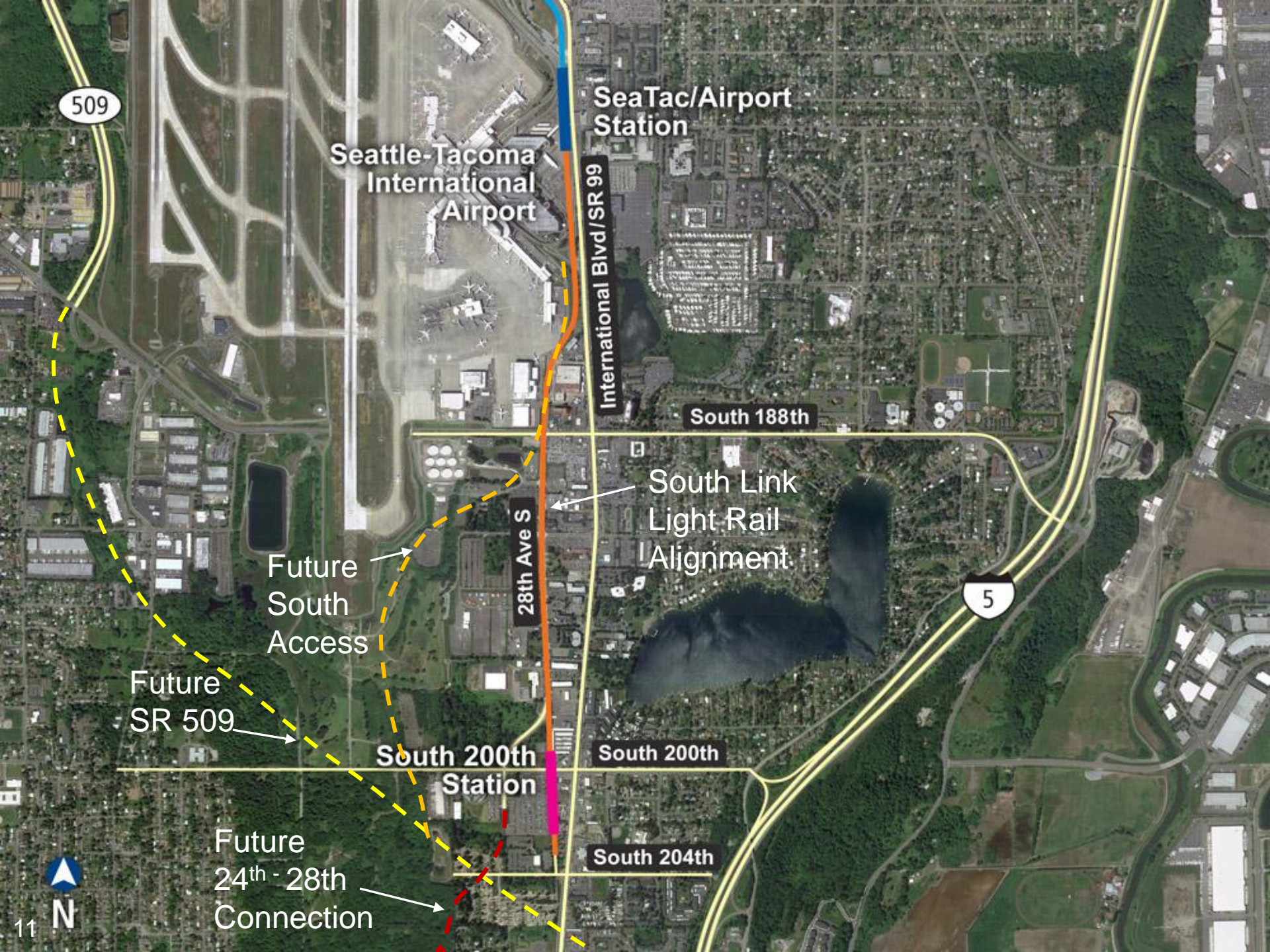
(Alphabetical Order)

- Bechtel Conti Joint Venture
- Mowat Construction Company / Stacy and Witbeck Inc. Joint Venture
- PCL Civil Constructors, Inc.
- South AirLink Constructors (SNC-Lavalin Group Inc. and Granite Construction – Joint Venture)
- Issued Final Request for Proposals on March 7
- Port staff presentation to shortlisted teams on March 29
- Proposals due on June 26

Third Party Agreements

- City of SeaTac
 - Development Agreement
- Port of Seattle
 - Memorandum of Agreement
- Private Utility Agreements
 - Puget Sound Energy
 - Century Link
 - Midway Sewer
 - Highline Water
 - Olympic Pipeline





509

SeaTac/Airport Station

Seattle-Tacoma International Airport

International Blvd/SR 99

South 188th

South Link Light Rail Alignment

28th Ave S

5

Future South Access

Future SR 509

South 200th Station

South 200th

South 204th

Future 24th - 28th Connection



N

11

South 200th Station Area Site Plan

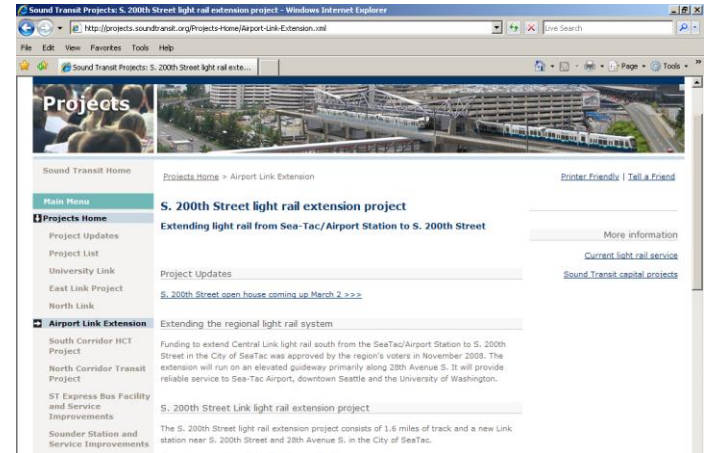


South 200th Station Aerial View



Community Outreach Update

- Open Houses
 - ✓ March 2, 2011
 - ✓ October 5, 2011
 - Summer 2012
- Menu of typical outreach activities (fact sheets, e-mails, letters, newsletters, website, social media, etc.)
- Field public inquiries
- Attend real estate meetings
- Attend fairs, festivals and events
- Comprehensive Stakeholder Outreach
- Coordination with Port of Seattle outreach staff



South Link Project Update

Next Steps

- Request Commission Approval of South Link MOA – May 8, 2012
- Property Transfer & Exchange Agreements – Summer 2012 - Fall 2016